

U.S. Government Progress Report on Great Lakes Restoration



Great Lakes Public Forum
Milwaukee, Wisconsin
September 9, 2013



Great Lakes
RESTORATION



GREAT LAKES WEEK

DETROIT 2011



Great Lakes RESTORATION



FY2010 – FY2014

Great Lakes Restoration Initiative Action Plan



February 21, 2010

*White House Council on Environmental Quality
U.S. Department of Agriculture
U.S. Department of Commerce
U.S. Department of Health and Human Services
U.S. Department of Homeland Security
U.S. Department of Housing and Urban Development
U.S. Department of State
U.S. Department of the Army
U.S. Department of the Interior
U.S. Department of Transportation
U.S. Environmental Protection Agency*



GLRI Focus Area: Toxic Substances and Areas of Concern



GLRI Focus Area: Invasive Species



GLRI Focus Area: Nearshore Health and Nonpoint Source Pollution



GLRI Focus Area: Habitat and Wildlife Protection and Restoration



**GLRI Focus Area: Accountability , Education , Monitoring,
Evaluation, Communication and Partnerships**

GREAT LAKES WEEK 2012



Great Lakes
RESTORATION



Great Lakes
Commission
des Grands Lacs



Great Lakes RESTORATION



Areas of Concern

Impaired Watersheds

Invasive Species

GREAT LAKES WEEK 2013



Environnement
Canada

Environnement
Canada



Great Lakes
RESTORATION



Great Lakes
Commission
des Grands Lacs



greatlakesrestoration.us

Find a GLRI Project

Use the map below to find GLRI project information. Or, see a [list of all GLRI projects](#).

(Note: the points on the map show the actual location of the project and/or the location of the entity managing the project.)

Enter a location (such as area of concern or watershed) or a project name in the search box. Select a year and click Search to query.

Year: All ▼ Search

Search Results for: : All Grants

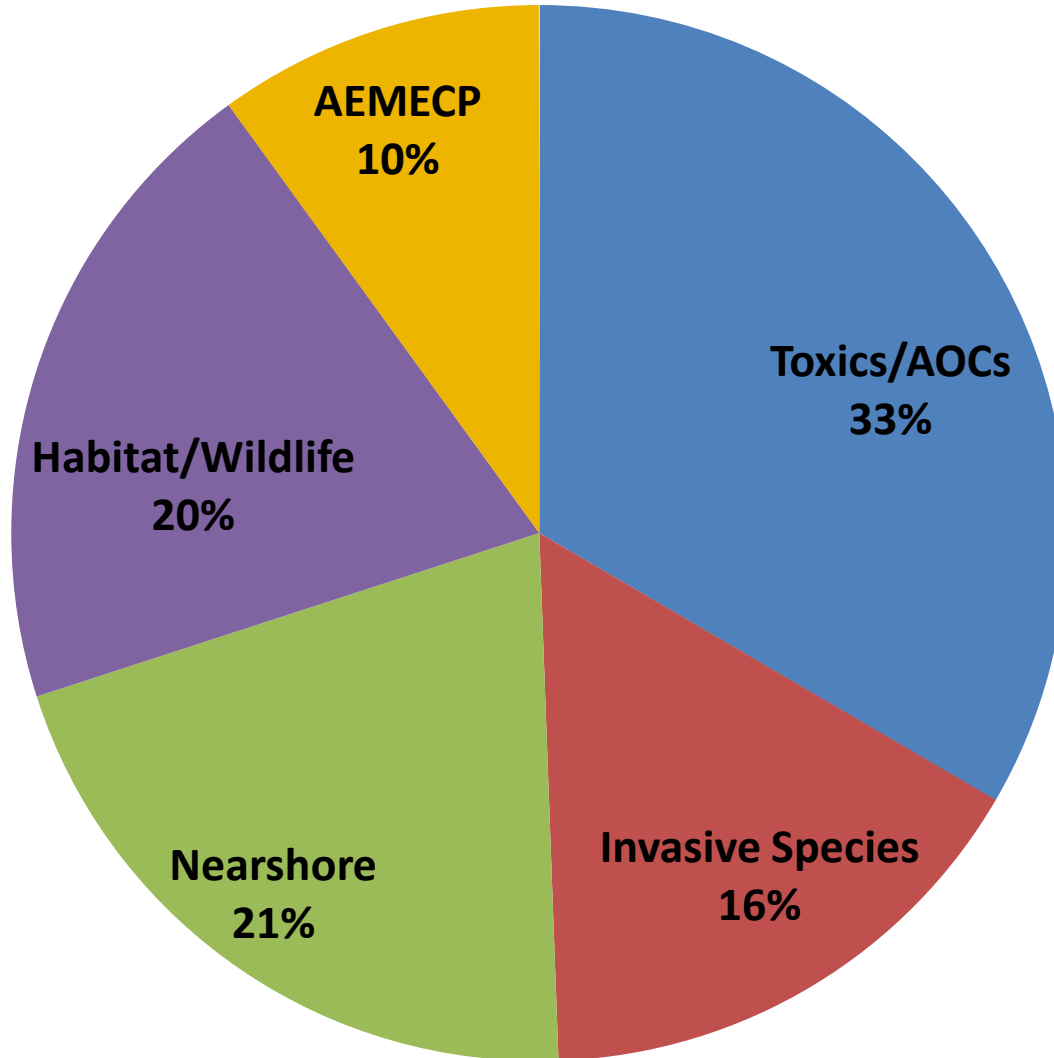
Results found: [1677](#) | Current view: 1614 | [Clear Results](#)

[Search results on map](#)

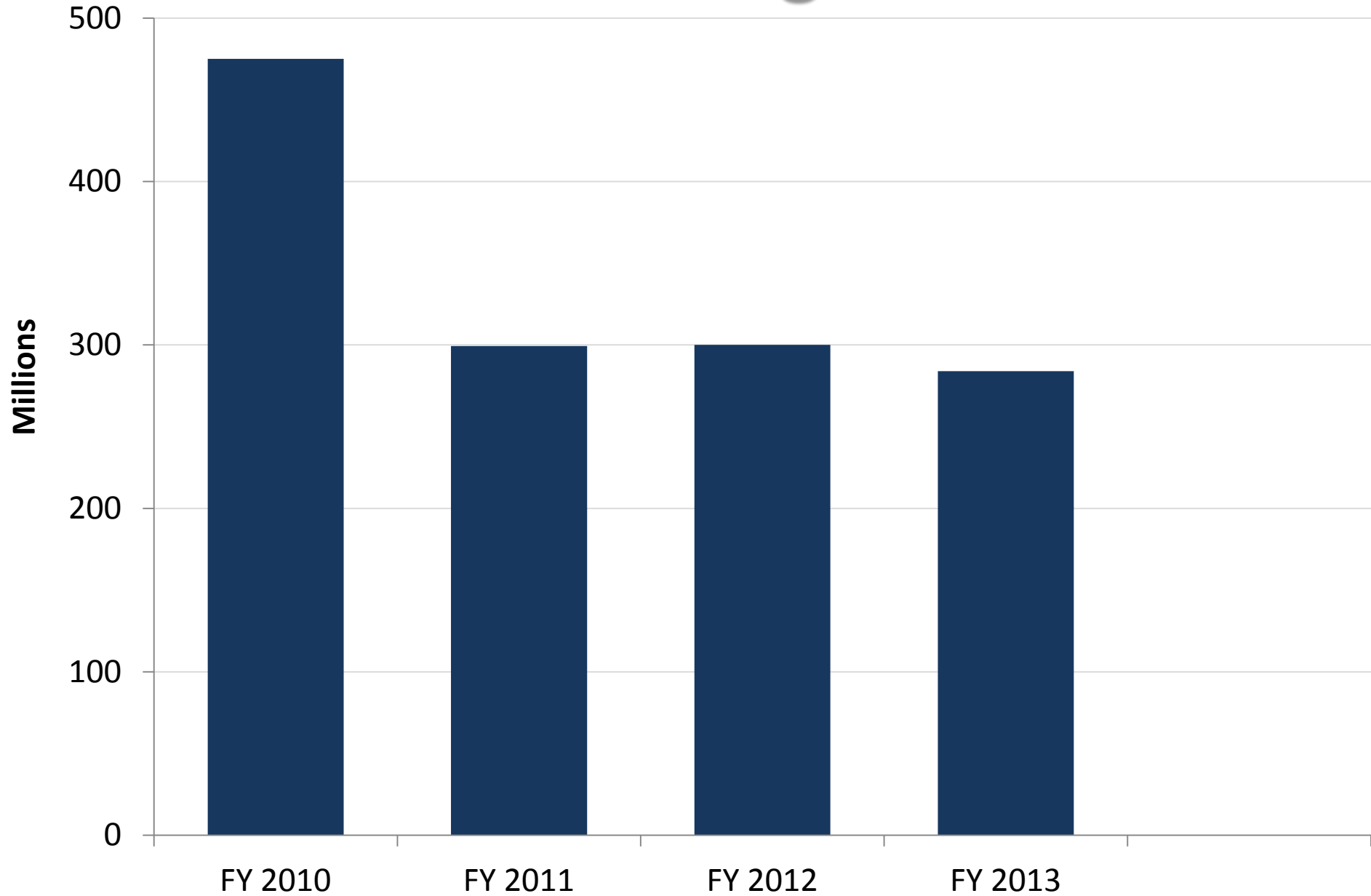
[Search results as a list](#)



GLRI Expenditures by Focus Areas



GLRI Budget



Great Lakes RESTORATION



Areas of Concern

Impaired Watersheds

Invasive Species

GLRI Priority: Cleaning Up AOCs



Beneficial Use Impairments Removed in U.S. Areas of Concern

1987

1992

1997 # # # # # # # # # # # #

2002

2007

-----*Great Lakes Restoration Initiative*

2012 # # # # # # # # # # # #

#



Presque Isle Bay

Great Lakes Areas of Concern

Great Lakes
Basin Boundary

FY 13 PRIORITY AOCs

Sheboygan River
Ashtabula River
Deer Lake
White Lake





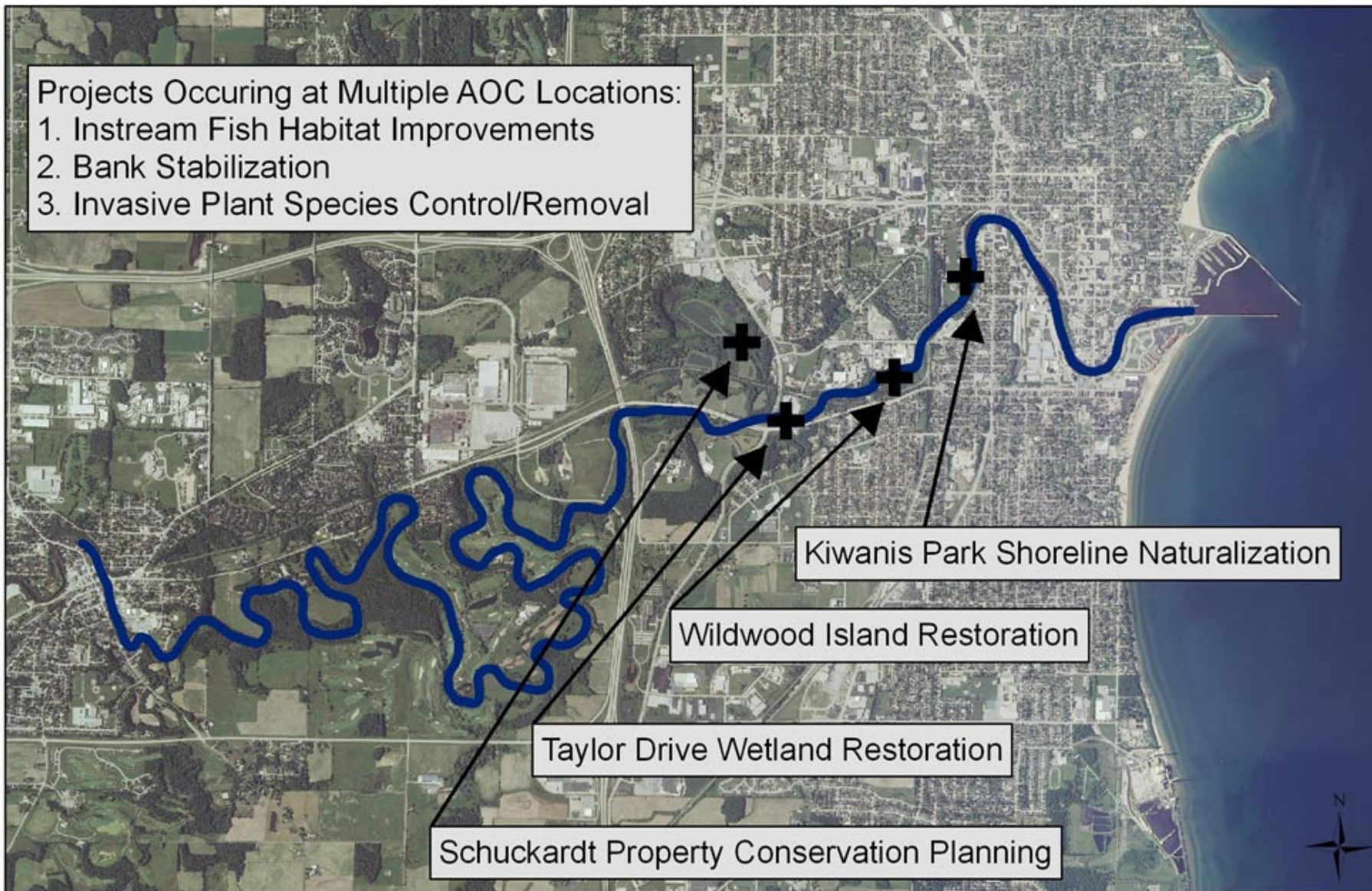
Sheboygan River AOC



Sheboygan River AOC

Projects Occuring at Multiple AOC Locations:

1. Instream Fish Habitat Improvements
2. Bank Stabilization
3. Invasive Plant Species Control/Removal



Sheboygan River Area of Concern

Proposed Projects for Delisting Fish and Wildlife Habitat/Populations BUIs





Ashtabula River AOC



Ashtabula River AOC



Deer Lake AOC



Deer Lake AOC



White Lake AOC

Great Lakes Areas of Concern

Great Lakes
Basin Boundary

FY 13 PRIORITY AOCs

Sheboygan River
Ashtabula River
Deer Lake
White Lake





River Raisin AOC

Great Lakes Areas of Concern

Great Lakes
Basin Boundary

FY 14 PRIORITY AOCs

Waukegan Harbor
St. Marys River
St. Clair River





Waukegan Harbor AOC



St. Marys River AOC

2010



St. Clair River AOC

2013



St. Clair River AOC

GLRI Priority: Cleaning Up AOCs



October 2011

February 2012



July 2013

September 2012



Grand Calumet River AOC





Grand Calumet River AOC



Buffalo River AOC

Cleaning Up Areas of Concern





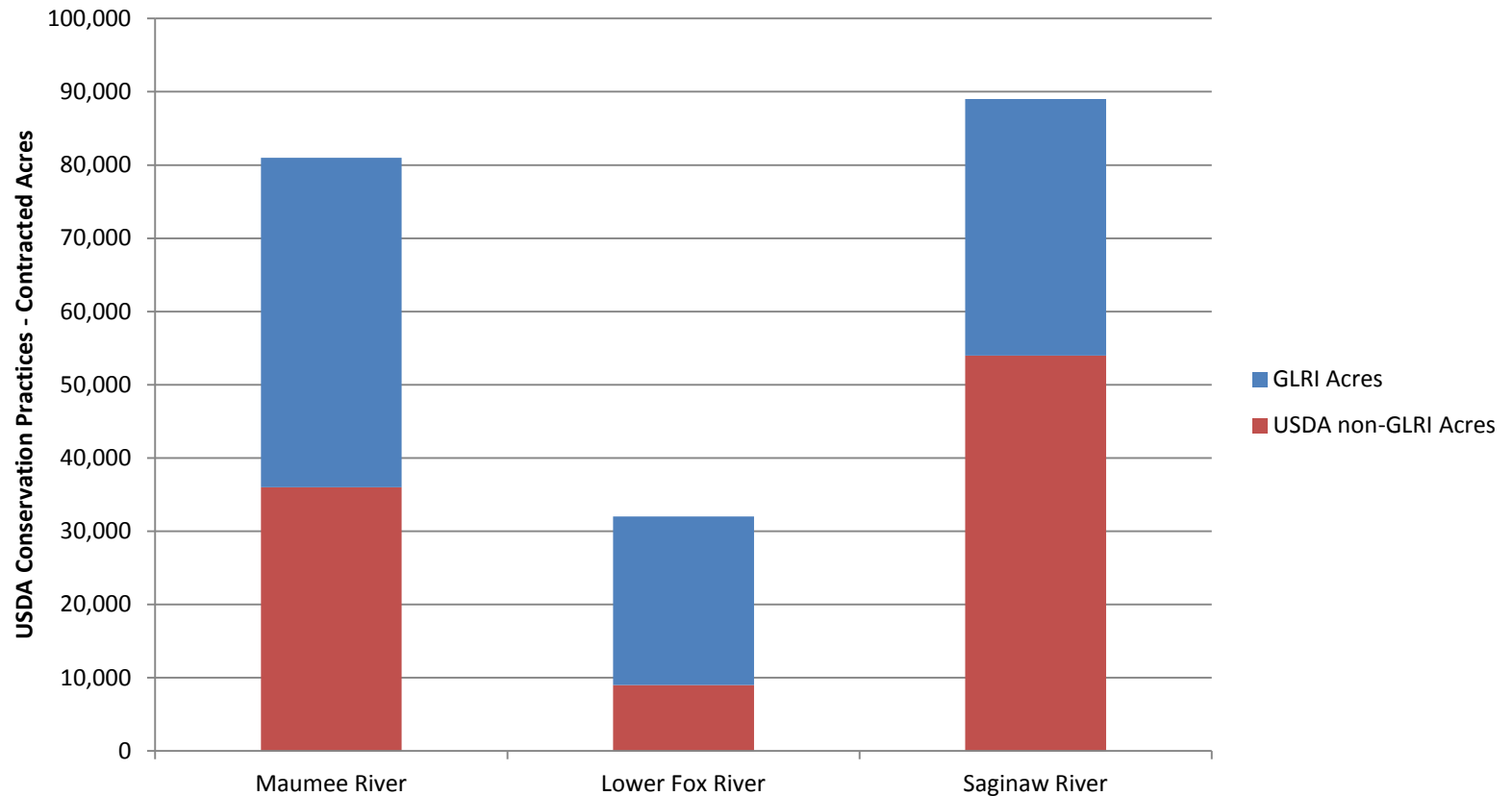
GLRI Priority: Impaired Watersheds

GLRI Priority: Impaired Watersheds



GLRI Priority: Impaired Watersheds

GLRI Funding Expands Availability of USDA Conservation Contracts
in Great Lakes Priority Watersheds
Contracted Acres (FY 2010-2012) as of Oct. 1, 2012







GLRI Priority: Invasive Species



GLRI Priority: Invasive Species



GLRI Priority: Invasive Species



GLRI Priority: Invasive Species

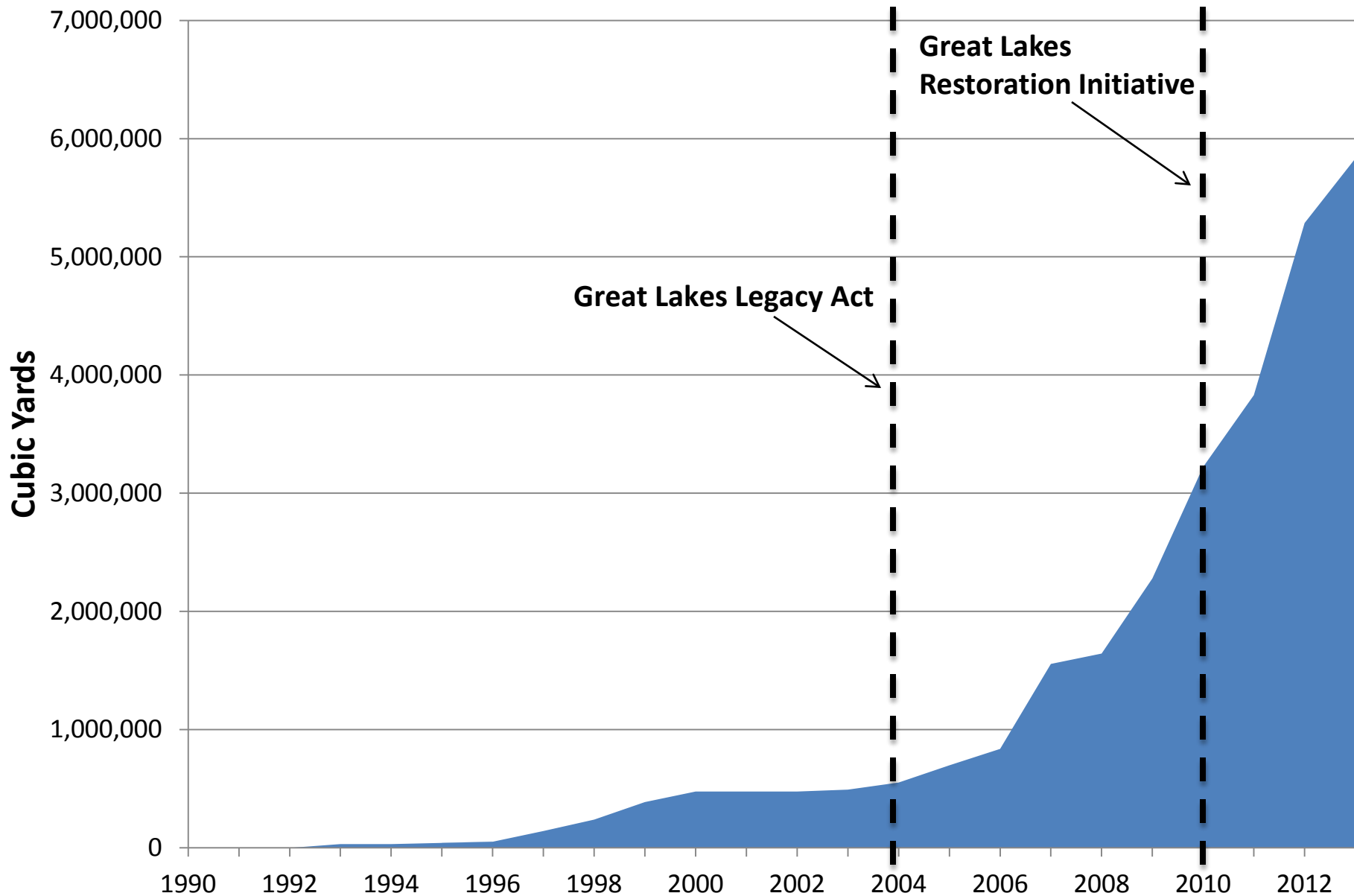


GLRI Priority: Invasive Species

Great Lakes RESTORATION

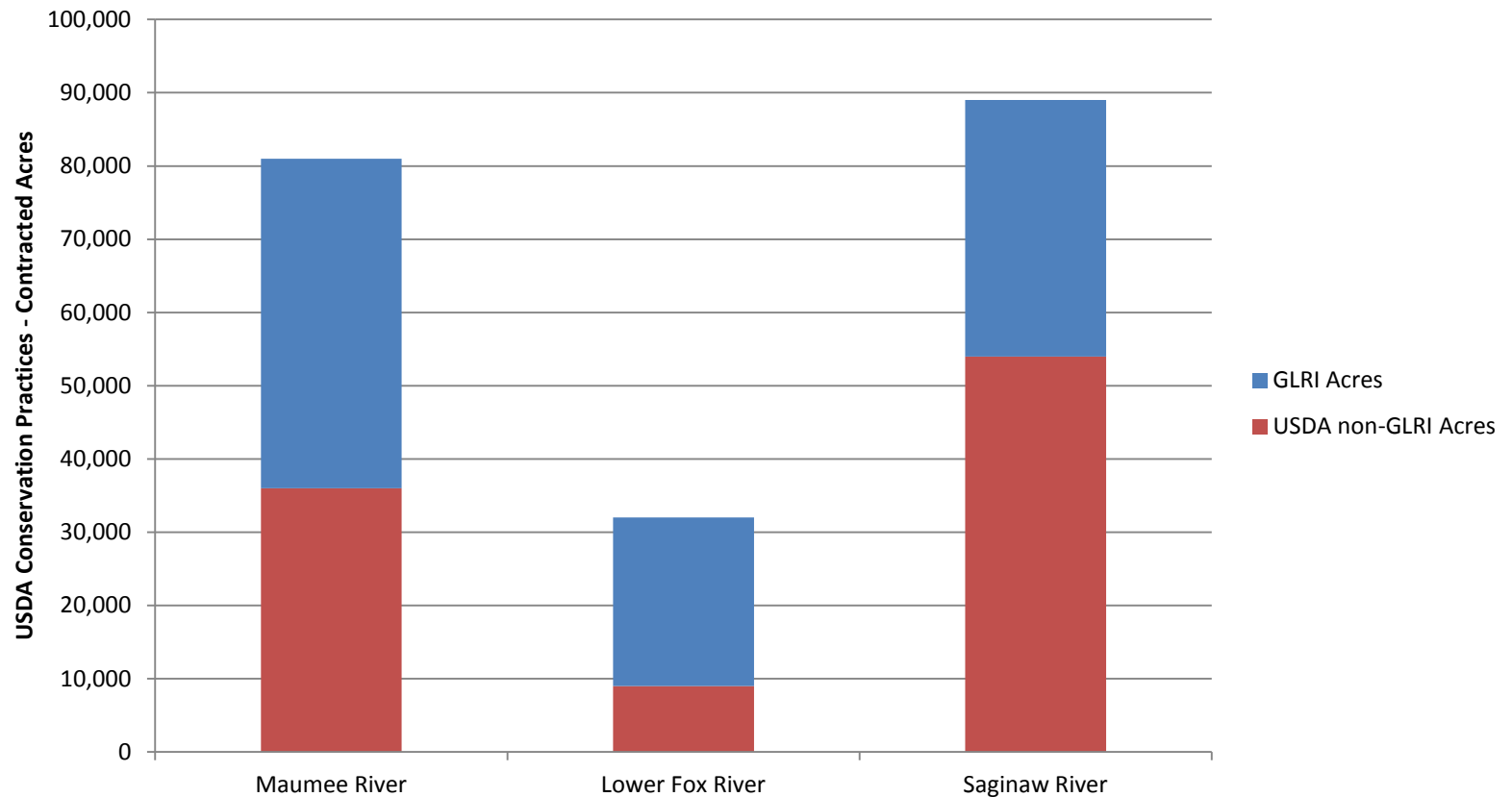


Cumulative Contaminated Sediment Removed from Great Lakes Areas of Concern



GLRI Priority: Impaired Watersheds

GLRI Funding Expands Availability of USDA Conservation Contracts in Great Lakes Priority Watersheds Contracted Acres (FY 2010-2012) as of Oct. 1, 2012





greatlakesrestoration.us

Find a GLRI Project

Use the map below to find GLRI project information. Or, see a [list of all GLRI projects](#).

(Note: the points on the map show the actual location of the project and/or the location of the entity managing the project.)

Enter a location (such as area of concern or watershed) or a project name in the search box. Select a year and click Search to query.

Year: All ▼ Search

Search Results for: : All Grants

Results found: [1677](#) | Current view: 1614 | [Clear Results](#)

[Search results on map](#)

[Search results as a list](#)



GLRI Budget

